

MADE IN GERMANY

SCHLEGEL[®]
ELEKTROKONTAKT
Fascinating Electrotechnics



proboxx

synergy of design and function



1-2-3

modern
versatile
individual



→ Enclosure series proboxx

Modern, elegant and compact enclosure with a maximum of flexibility

- **Empty enclosures** page 10
- **M12 connection** page 11
- **IO-Link** page 15
- **AS-Interface** page 19
- **sWave® radio technology** page 23



→ The proboxx in detail

Particular attention was devoted to the design of the proboxx. Therefore, the screw fitting was deliberately placed on the bottom side, so the enclosure's appearance is not disturbed by exposed screw heads. This aesthetic detail corresponds with the added value of safety: The enclosure can not be opened without dismounting it. For the labelling of the pushbuttons and switches special labels have been developed which fit perfectly into the design and can be fixed easily by clipping on. The inscription is custom-made and engraved by lasering.

- high-quality, stable enclosure made of polyamide
- appealing design
- innovative mounting mechanism for base, wall and profile mounting
- asymmetrical placement on guard lockings
- screw fitting on the bottom
- labels to clip on (laser marked)
- degree of protection IP65
- dimensions
 - width 52 mm
 - height 44 mm
 - length 69 mm, 105 mm, 141 mm, 177 mm
- pushbuttons and switches
 - pilot lights
 - pushbuttons
 - selector/key switches
 - emergency-stop

→ proboxx: Synergy of design and function

Flexible, functional und elegant - these are the characteristics featuring our new enclosure series proboxx made in Dürmentingen. With the new product line we - the expert for pushbuttons and switches - are complementing our portfolio of enclosures by a particularly classy and also practical variant making daily work easier.

We currently offer the proboxx as empty enclosure or also as assembled variant. The assembled variant is available for four different systems.

- Empty enclosure
- Assembled M12 enclosure
- Assembled IO-Link enclosure
- Assembled AS-Interface enclosure
- Assembled enclosure with sWave® radio technology





How to configure and order my proboxx

Orders and individual assemblies of the proboxx can be submitted via the new Schlegel online configurator for enclosures. Based on your requirements, you can select an empty enclosure or an assembled one and choose the most suitable assembly for your application from a variety of sizes and systems.

→ proboxx.schlegel.biz



Get started with the startboxx

Would you like to get familiar with the proboxx now? Then simply order our startboxx! The startboxx is a fully functional proboxx equipped with 3 pushbuttons and switches. The proboxx is easy to connect via the M12 connector and can be used immediately.

→ Simple

Thanks to the new innovative mounting mechanism the enclosures are quick and easy to assemble. The enclosure is securely fixed by simply sliding and snapping it in.



→ Functional

- direct integration in IO-Link or AS-Interface systems
- asymmetric fixing for safety gates
- optional, flexible labelling option



→ Plug & Work

Simply to connect with M12 connector, no wiring necessary.



→ flexible

- up to 4 holes for pushbuttons and switches
- various connection options (M12, M16 cable gland, radio system)
- available as pre-equipped or empty enclosure



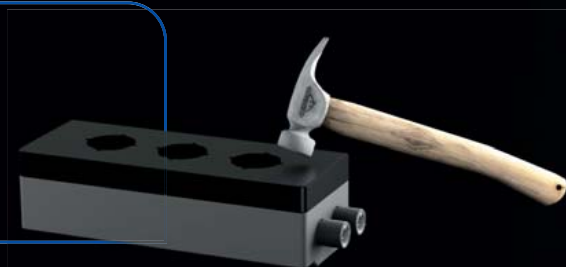
→ Valuable

Appealing, high-quality and modern design



→ Reliable

- stable plastic enclosure
- degree of protection IP65





→ Empty enclosure

- individual use
- with predetermined breaking point for M16 cable glands
- without predetermined breaking point for the use with radio systems or special connectors



→ Assembled M12 enclosure

- for conventional wiring
- two M12 connectors
- the emergency-stop is connected separately via the second M12 connector



→ Assembled IO-Link enclosure

- IO-Link certified
- two M12 connectors (IO-Link / emergency-stop (AIDA))
- IO-Link status indication
- The following features can be parameterised:
 - dimming or night design of all LEDs
 - operating hours meter
 - monitoring of switching cycles (lifetime) of each pushbutton or switch
 - monitoring of the status indication





→ Assembled AS-Interface enclosure

- AS-Interface certified
- two M12 connectors (bus is looped through)
- AS-Interface status indication
- Safety@Work (emergency-stop)



→ Assembled enclosure with sWave® radio technology

Transmitter

- sWave® technology of steute
- frequency range 868 MHz (EU and China)
- bidirectional communication (transmitter electronics with long-life battery)
- LED for status indication (monitoring of switching states and battery)
- range of up to 450 m in the open field and up to 40 m indoors

Receiver

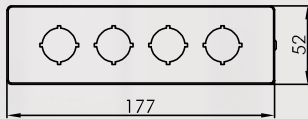
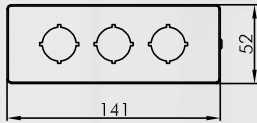
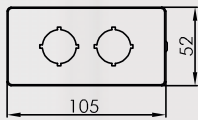
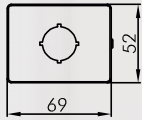
- sWave® technology of steute
- frequency range 868 MHz (EU and China)
- 4 potential-free relay outputs (NO)
- learning mode (assignment of outputs)
- LED status indication (switching states)
- range of up to 450 m in the open field and up to 40 m indoors



Insulated plastic enclosures

Illustration Dimensions Description Type

IP65

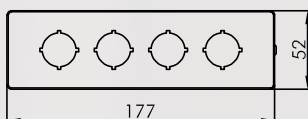
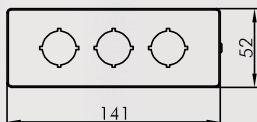
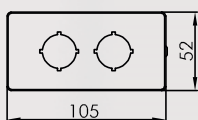
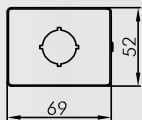


Empty enclosure with predetermined breaking point

for pushbuttons and switches of the SHORTRON series

Equipped	no	
Material	PA6	
Cable entry	break-through wall M16	
Mounting holes	1	
Panel cut-out	Ø 22.3 mm	
colour	dark-grey bottom part/black cover	PXD1
Mounting holes	2	
Panel cut-out	Ø 22.3 mm	
colour	dark-grey bottom part/black cover	PXD2
Mounting holes	3	
Panel cut-out	Ø 22.3 mm	
colour	dark-grey bottom part/black cover	PXD3
Mounting holes	4	
Panel cut-out	Ø 22.3 mm	
Panel cut-out		
colour	dark-grey bottom part/black cover	PXD4

IP65



Leergehäuse

Ohne Anschlussvorrichtung für eigene Anschlüsse oder Funk zur Selbstbestückung.

Bestückbar mit SHORTRON Befehlsgeräten.

Bestückt	nein	
Material	PA6	
Leitungseinführung		
Befehlsstellen	1	
Einbauöffnung	Ø 22,3 mm	
Farbe	Unterteil dunkelgrau/Oberteil schwarz	PX01
Mounting holes	2	
Panel cut-out	Ø 22.3 mm	
colour	dark-grey bottom part/black cover	PX02
Mounting holes	3	
Panel cut-out	Ø 22.3 mm	
colour	dark-grey bottom part/black cover	PX03
Mounting holes	4	
Panel cut-out	Ø 22.3 mm	
colour	dark-grey bottom part/black cover	PX04

Equipped insulated plastic enclosures M12

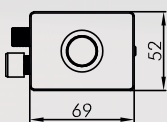
Illustration

Dimensions

Description

Type

IP65



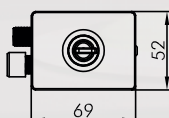
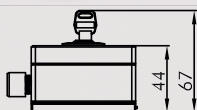
**Enclosure with M12 connector
Pushbutton**

- equipped with 1 pushbutton RRJT (without nameplate, without lens)
- operating voltage 24 V AC/DC

Equipped	yes
Material	PA6
Cable entry	5-pole M12, A coded
Mounting holes	1

PXM1M0000

IP65



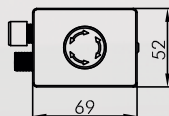
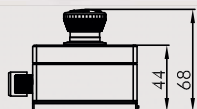
**Enclosure with M12 connector
Key switch**

- equipped with 1 two-position key switch RRJSSA15
- operating voltage 24 V AC/DC

Equipped	yes
Material	PA6
Cable entry	5-pole M12, A coded
Mounting holes	1

PXM1M0001

IP65



**Enclosure with M12 connector
Emergency-stop**

- equipped with 1 emergency-stop RRJUV
- pin assignment emergency-stop: AIDA
- operating voltage 24 V AC/DC

Equipped	yes
Material	PA6
Cable entry	5-pole M12, A coded, AIDA
Mounting holes	1

PXM1M1000

About Us

Pushbuttons/Switches

Panel Mount Jacks

Emergency-Stop Buttons

Bus Technology

RFID

Enclosures

Pedal Switches

Terminal Blocks

Type Index

Equipped insulated plastic enclosures M12

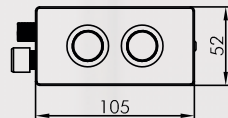
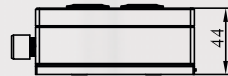
Illustration

Dimensions

Description

Type

IP65



**Enclosure with M12 connector
2 pushbuttons**

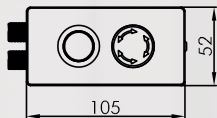
- equipped with 2 pushbuttons RRJT (without nameplate, without lens)
- operating voltage 24 V AC/DC

Equipped yes
Material PA6
Cable entry 8-pole M12, A coded

Mounting holes 2

PXM2M0002

IP65



**Enclosure with M12 connector
Pushbutton, emergency-stop**

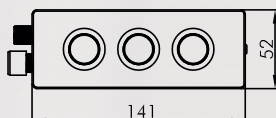
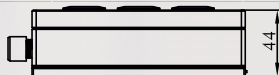
- equipped with 1 pushbutton RRJT (without nameplate, without lens) and 1 emergency-stop RRJUV
- pin assignment emergency-stop: AIDA
- operating voltage 24 V AC/DC

Equipped yes
Material PA6
Cable entry 2x M12 5-pole (AIDA)/5 pole, A coded

Mounting holes 2

PXM2M1001

IP65



**Enclosure with M12 connector
3 pushbuttons**

- equipped with 3 pushbuttons RRJT (without nameplate, without lens)
- operating voltage 24 V AC/DC

Equipped yes
Material PA6
Cable entry 12-pole M12, A coded

Mounting holes 3

PXM3M0003

Equipped insulated plastic enclosures M12

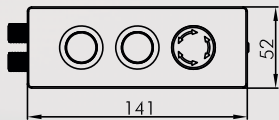
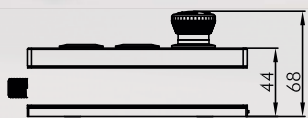
Illustration

Dimensions

Description

Type

IP65



**Enclosure with M12 connector
2 pushbuttons, emergency-stop**

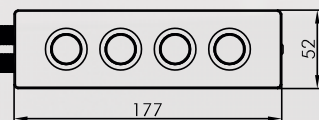
- equipped with 2 pushbuttons RRJT (without nameplate, without lens) and 1 emergency-stop RRJUV
- pin assignment emergency-stop: AIDA
- operating voltage 24 V AC/DC

Equipped yes
Material PA6
Cable entry 2x M12 5-pole (AIDA)/8-pole, A coded

Mounting holes 3

PXM3M1002

IP65



**Enclosure with M12 connector
4 pushbuttons**

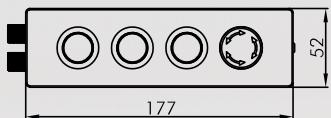
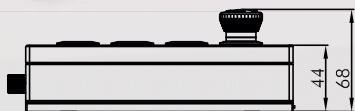
- equipped with 4 pushbuttons RRJT (without nameplate, without lens)
- operating voltage 24 V AC/DC

Equipped yes
Material PA6
Cable entry 2x M12 8-pole, A coded

Mounting holes 4

PXM4M0004

IP65



**Enclosure with M12 connector
3 pushbuttons, emergency-stop**

- equipped with 3 pushbuttons RRJT (without nameplate, without lens) and 1 emergency-stop RRJUV
- pin assignment emergency-stop: AIDA
- operating voltage 24 V AC/DC

Equipped yes
Material PA6
Cable entry 2x M12 5-pole (AIDA)/12-pole, A coded

Mounting holes 4

PXM4M1003

Equipped insulated plastic enclosures M12

Illustration

Dimensions

Description

Type

IP65



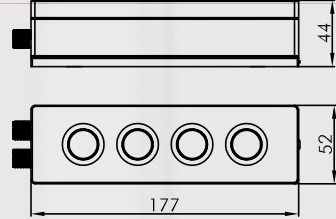
**Enclosure with M12 connector
Key switch, 2 pushbuttons, emergency-stop**

- equipped with 1 key switch RRJSSA15, 2 pushbuttons RRJT (without nameplate, without lens) and 1 emergency-stop RRJUV
- pin assignment emergency-stop: AIDA
- operating voltage 24 V AC/DC

Equipped yes
Material PA6
Cable entry 2x M12 5-pole (AIDA)/12-pole, A coded

Mounting holes 4

PXM4M1004



**customised configuration of the proboxx
under proboxx.schlegel.biz**

Equipped insulated plastic enclosures IO-Link



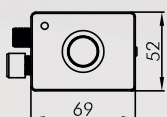
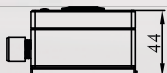
Illustration

Dimensions

Description

Type

IP65



Enclosure for IO-Link interface Pushbutton

- IO-Link certified
- equipped with 1 pushbutton ST (without nameplate, without lens)
- IO-Link status indication
- IODD file via IODD finder
- class A

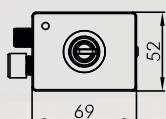
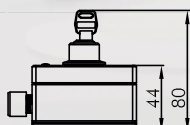
Parameterisation

- dimming and night design of all LEDs
- operating hours meter
- monitoring of switching cycles of each pushbutton or switch
- monitoring of status indication

Equipped	yes
Material	PA6
Cable entry	5-pole M12, A coded
Mounting holes	1

PXI1M0005

IP65



Enclosure for IO-Link interface Key switch

- IO-Link certified
- equipped with 1 key switch SSSA15
- IO-Link status indication
- IODD file via IODD finder
- class A

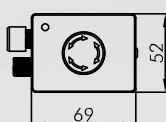
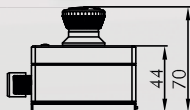
Parameterisation

- operating hours meter
- monitoring of switching cycles of each pushbutton or switch
- monitoring of status indication

Equipped	yes
Material	PA6
Cable entry	5-pole M12, A coded
Mounting holes	1

PXI1M0006

IP65



Enclosure for IO-Link interface Emergency-stop

- equipped with 1 emergency-stop FRVKZ
- pin assignment emergency-stop: AIDA

Equipped	yes
Material	PA6
Cable entry	5-pole M12, A coded, AIDA
Mounting holes	1

PXI1M1005

About Us

Pushbuttons/Switches

Panel Mount Jacks

Emergency-Stop Buttons

Bus Technology

RFID

Enclosures

Pedal Switches

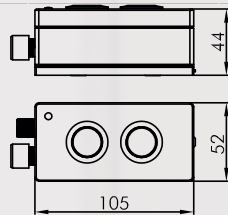
Terminal Blocks

Type Index

Equipped insulated plastic enclosures IO-Link



Illustration Dimensions Description Type



**Enclosure for IO-Link interface
2 pushbuttons**

- IO-Link certified
- equipped with 2 pushbuttons ST (without nameplate, without lens)
- IO-Link status indication
- IODD file via IODD finder
- class A

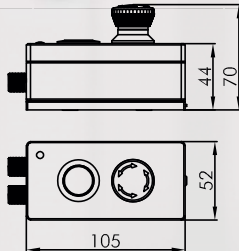
Parameterisation

- dimming and night design of all LEDs
- operating hours meter
- monitoring of switching cycles of each pushbutton or switch
- monitoring of status indication

Equipped yes
Material PA6
Cable entry 5-pole M12, A coded

Mounting holes 2

PX12M0007



**Enclosure for IO-Link interface
Pushbutton, emergency-stop**

- IO-Link certified
- equipped with 1 pushbutton ST (without nameplate, without lens) and 1 emergency-stop FRVKOO
- pin assignment emergency-stop: AIDA
- IO-Link status indication
- IODD file via IODD finder
- class A

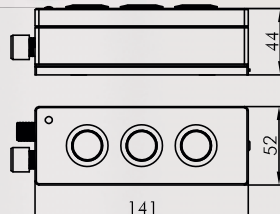
Parameterisation

- dimming and night design of all LEDs
- operating hours meter
- monitoring of switching cycles of each pushbutton or switch
- monitoring of status indication

Equipped yes
Material PA6
Cable entry 2x M12 5-pole (AIDA)/5 pole, A coded

Mounting holes 2

PX12M1006



**Enclosure for IO-Link interface
3 pushbuttons**

- IO-Link certified
- equipped with 3 pushbuttons ST (without nameplate, without lens)
- IO-Link status indication
- IODD file via IODD finder
- class A

Parameterisation

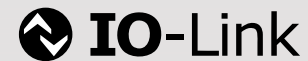
- dimming and night design of all LEDs
- operating hours meter
- monitoring of switching cycles of each pushbutton or switch
- monitoring of status indication

Equipped yes
Material PA6
Cable entry 5-pole M12, A coded

Mounting holes 3

PX13M0008

Equipped insulated plastic enclosures IO-Link



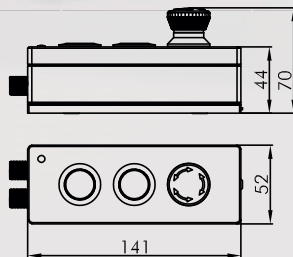
Illustration

Dimensions

Description

Type

IP65



**Enclosure for IO-Link interface
2 pushbuttons, emergency-stop**

- IO-Link certified
- equipped with 2 pushbuttons ST (without nameplate, without lens) and 1 emergency-stop FRVKOO
- pin assignment emergency-stop: AIDA
- IO-Link status indication
- IODD file via IODD finder
- class A

Parameterisation

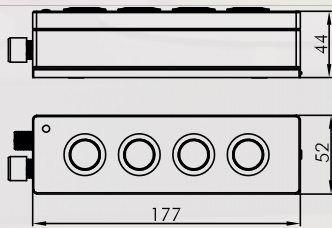
- dimming and night design of all LEDs
- operating hours meter
- monitoring of switching cycles of each pushbutton or switch
- monitoring of status indication

Equipped yes
Material PA6
Cable entry 2x M12 5-pole (AIDA)/5 pole, A coded

Mounting holes 3

PXI3M1007

IP65



**Enclosure for IO-Link interface
4 pushbuttons**

- IO-Link certified
- equipped with 4 pushbuttons ST (without nameplate, without lens)
- IO-Link status indication
- IODD file via IODD finder
- class A

Parameterisation

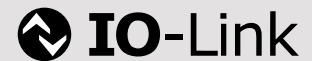
- dimming and night design of all LEDs
- operating hours meter
- monitoring of switching cycles of each pushbutton or switch
- monitoring of status indication

Equipped yes
Material PA6
Cable entry 5-pole M12, A coded

Mounting holes 4

PXI4M0009

Equipped insulated plastic enclosures IO-Link



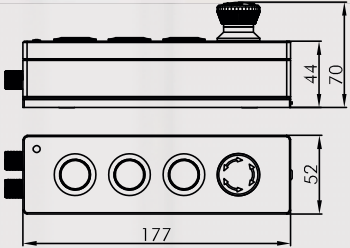
Illustration

Dimensions

Description

Type

IP65



**Enclosure for IO-Link interface
3 pushbuttons, emergency-stop**

- IO-Link certified
- equipped with 3 pushbuttons ST (without nameplate, without lens) and 1 emergency-stop FRVKOO
- pin assignment emergency-stop: AIDA
- IO-Link status indication
- IODD file via IODD finder
- class A

Parameterisation

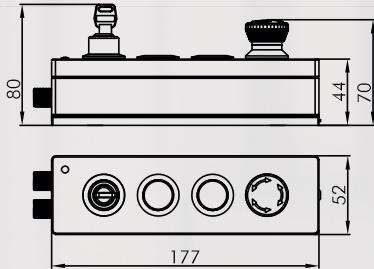
- dimming and night design of all LEDs
- operating hours meter
- monitoring of switching cycles of each pushbutton or switch
- monitoring of status indication

Equipped yes
Material PA6
Cable entry 2x M12 5-pole (AIDA)/5 pole, A coded

Mounting holes 4

PXI4M1008

IP65



**Enclosure for IO-Link interface
Key switch, 2 pushbuttons, emergency-stop**

- IO-Link certified
- equipped with 1 key switch SSSA15, 2 pushbuttons ST (without nameplate, without lens) and 1 emergency-stop FRVKOO
- pin assignment emergency-stop: AIDA
- IO-Link status indication
- IODD file via IODD finder
- class A

Parameterisation

- dimming and night design of all LEDs
- operating hours meter
- monitoring of switching cycles of each pushbutton or switch
- monitoring of status indication

Equipped yes
Material PA6
Cable entry 2x M12 5-pole (AIDA)/5 pole, A coded

Mounting holes 4

PXI4M1009

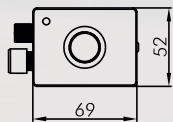
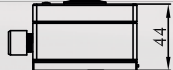
**customised configuration of the proboxx
under proboxx.schlegel.biz**

Equipped insulated plastic enclosures AS-Interface



Illustration Dimensions Description Type

IP65



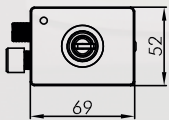
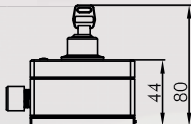
Enclosure with AS-i interface Pushbutton

- AS-Interface certified
- equipped with 1 pushbutton ST (without nameplate, without lens)
- specification 3.0 / 1A/B address
- profile S-7.A.7.7
- ASI status indication
- total power consumption ≤ 200 mA

Equipped yes
Material PA6
Cable entry 2x M12 5-pole, A coded
Mounting holes 1

PXA1M0010

IP65



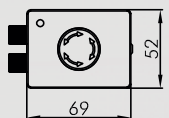
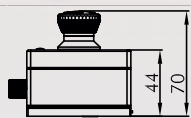
Enclosure with AS-i interface Key switch

- AS-Interface certified
- equipped with 1 key switch SSSA15
- specification 3.0 / 1A/B address
- profile S-7.A.7.7
- ASI status indication
- total power consumption ≤ 200 mA

Equipped yes
Material PA6
Cable entry 2x M12 5-pole, A coded
Mounting holes 1

PXA1M0011

IP65



Enclosure with AS-i interface Emergency-stop

- AS-Interface certified
- equipped with 1 emergency-stop FRVKZ
- Safety@Work
- specification 2.1
- profile S-7.B.E
- ASI status indication
- total power consumption ≤ 200 mA

Equipped yes
Material PA6
Cable entry 2x M12 5-pole, A coded
Mounting holes 1

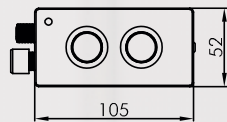
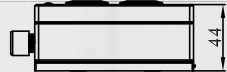
PXA1M1010

Equipped insulated plastic enclosures AS-Interface



Illustration Dimensions Description Type

IP65



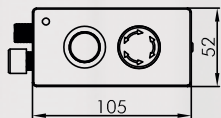
**Enclosure with AS-i interface
2 pushbuttons**

- AS-Interface certified
- equipped with 2 pushbuttons ST (without nameplate, without lens)
- specification 3.0 / 1A/B address
- profile S-7.A.7.7
- ASI status indication
- total power consumption ≤ 200 mA

Equipped yes
Material PA6
Cable entry 2x M12 5-pole, A coded
Mounting holes 2

PXA2M0012

IP65



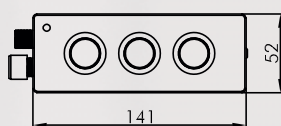
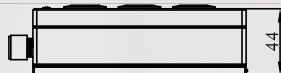
**Enclosure with AS-i interface
Pushbutton, emergency-stop**

- AS-Interface certified
- equipped with 1 pushbutton ST (without nameplate, without lens) and 1 emergency-stop FRVKOO
- specification 3.0 / 1A/B address
- profile S-7.A.7.7
- Safety@Work (emergency-stop)
- specification 2.1
- profile S-7.B.E
- ASI status indication
- total power consumption ≤ 200 mA

Equipped yes
Material PA6
Cable entry 2x M12 5-pole, A coded
Mounting holes 2

PXA2M1011

IP65



**Enclosure with AS-i interface
3 pushbuttons**

- AS-Interface certified
- equipped with 3 pushbuttons ST (without nameplate, without lens)
- specification 3.0 / 1A/B address
- profile S-7.A.7.7
- ASI status indication
- total power consumption ≤ 200 mA

Equipped yes
Material PA6
Cable entry 2x M12 5-pole, A coded
Mounting holes 3

PXA3M0013

Equipped insulated plastic enclosures AS-Interface



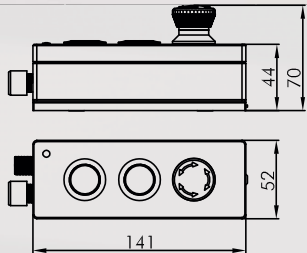
Illustration

Dimensions

Description

Type

IP65



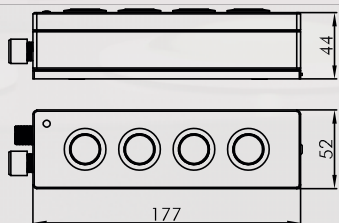
**Enclosure with AS-i interface
2 pushbuttons, emergency-stop**

- AS-Interface certified
- equipped with 2 pushbuttons ST (without nameplate, without lens) and 1 emergency-stop FRVKOO
- specification 3.0 / 1A/B address
- profile S-7.A.7.7
- Safety@Work (emergency-stop)
- specification 2.1
- profile S-7.B.E
- ASI status indication
- total power consumption ≤ 200 mA

Equipped yes
Material PA6
Cable entry 2x M12 5-pole, A coded
Mounting holes 3

PXA3M1012

IP65



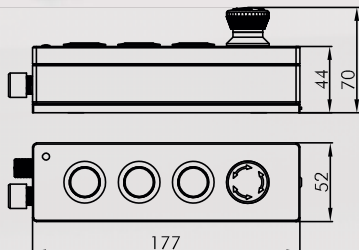
**Enclosure with AS-i interface
4 pushbuttons**

- AS-Interface certified
- equipped with 4 pushbuttons ST (without nameplate, without lens)
- specification 3.0 / 1A/B address
- profile S-7.A.7.7
- ASI status indication
- total power consumption ≤ 200 mA

Equipped yes
Material PA6
Cable entry 2x M12 5-pole, A coded
Mounting holes 4

PXA4M0014

IP65



**Enclosure with AS-i interface
3 pushbuttons, emergency-stop**

- AS-Interface certified
- equipped with 3 pushbuttons ST (without nameplate, without lens) and 1 emergency-stop FRVKOO
- specification 3.0 / 1A/B address
- profile S-7.A.7.7
- Safety@Work (emergency-stop)
- specification 2.1
- profile S-7.B.E
- ASI status indication
- total power consumption ≤ 200 mA

Equipped yes
Material PA6
Cable entry 2x M12 5-pole, A coded
Mounting holes 4

PXA4M1013

Equipped insulated plastic enclosures AS-Interface



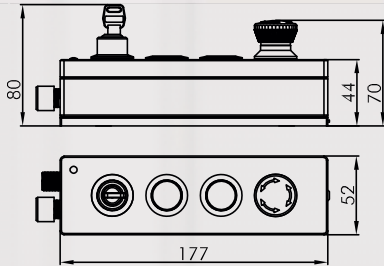
Illustration

Dimensions

Description

Type

IP65



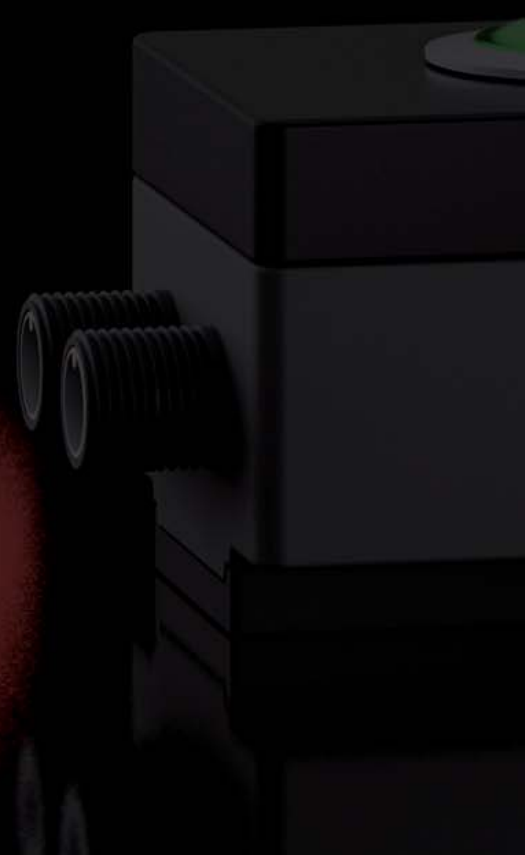
**Enclosure with AS-i interface
Key switch, 2 pushbuttons, emergency-stop**

- AS-Interface certified
- equipped with 1 key switch SSSA15, 2 pushbuttons ST (without nameplate, without lens) and 1 emergency-stop FRVKKO
- specification 3.0 / 1A/B address
- profile S-7.A.7.7
- Safety@Work (emergency-stop)
- specification 2.1
- profile S-7.B.E
- ASI status indication
- total power consumption ≤ 200 mA

Equipped	yes
Material	PA6
Cable entry	2x M12 5-pole, A coded
Mounting holes	4

PXA4M1014

**customised configuration of the proboxx
under proboxx.schlegel.biz**



Equipped insulated plastic enclosures with sWave® radio technology

sWave®

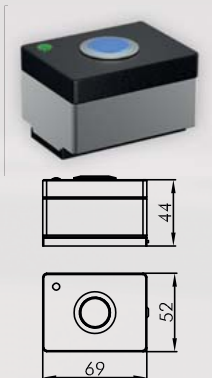
Illustration

Dimensions

Description

Type

IP65



**Enclosure with radio technology
Pushbutton**

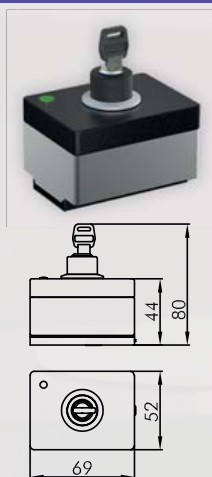
- equipped with 1 pushbutton ST (without nameplate, without lens)
- sWave® radio technology
- frequency 868.3 MHz (EU, China)
- long-life battery + performance monitoring
- bidirectional communication
- LED status indication
- range of up to 450 m in the open field and up to 40 m indoors

Equipped yes
Material PA6

Mounting holes 1

PXF1M0015

IP65



**Enclosure with radio technology
Key switch**

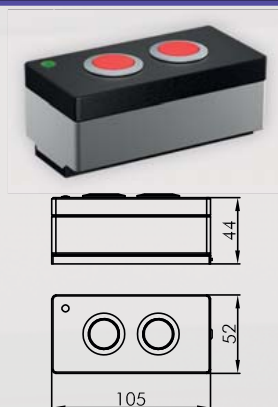
- equipped with 1 key switch SSSA15
- sWave® radio technology
- frequency 868.3 MHz (EU, China)
- long-life battery + performance monitoring
- bidirectional communication
- LED status indication
- range of up to 450 m in the open field and up to 40 m indoors

Equipped yes
Material PA6

Mounting holes 1

PXF1M0016

IP65



**Enclosure with radio technology
2 pushbuttons**

- equipped with 2 pushbuttons ST (without nameplate, without lens)
- sWave® radio technology
- frequency 868.3 MHz (EU, China)
- long-life battery + performance monitoring
- bidirectional communication
- LED status indication
- range of up to 450 m in the open field and up to 40 m indoors

Equipped yes
Material PA6

Mounting holes 2

PXF2M0017

About Us

Pushbuttons / Switches

Panel Mount Jacks

Emergency-Stop Buttons

Bus Technology

RFID

→ Enclosures

Pedal Switches

Terminal Blocks

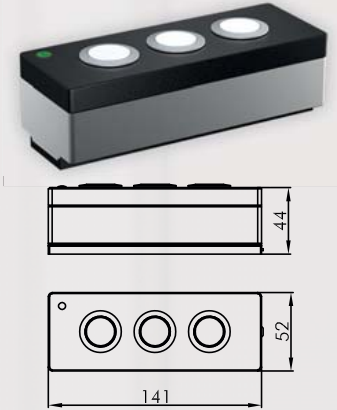
Type Index

Equipped insulated plastic enclosures with sWave® radio technology

sWave®

Illustration Dimensions Description Type

IP65



**Enclosure with radio technology
3 pushbuttons**

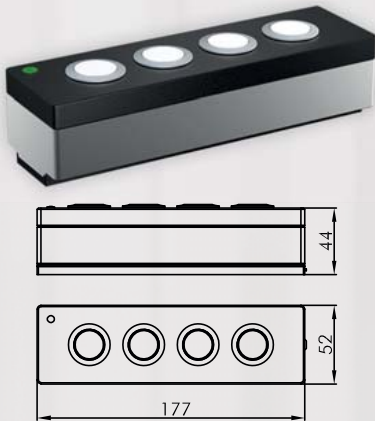
- equipped with 3 pushbuttons ST (without nameplate, without lens)
- sWave® radio technology
- frequency 868.3 MHz (EU, China)
- long-life battery + performance monitoring
- bidirectional communication
- LED status indication
- range of up to 450 m in the open field and up to 40 m indoors

Equipped yes
Material PA6

Mounting holes 3

PXF3M0018

IP65



**Enclosure with radio technology
4 pushbuttons**

- equipped with 4 pushbuttons ST (without nameplate, without lens)
- sWave® radio technology
- frequency 868.3 MHz (EU, China)
- long-life battery + performance monitoring
- bidirectional communication
- LED status indication
- range of up to 450 m in the open field and up to 40 m indoors

Equipped yes
Material PA6

Mounting holes 4

PXF4M0019

IP20









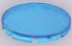








Radio receiver

- sWave® radio technology
- frequency 868.3 MHz (EU, China)
- 4 radio channels
- 4 NO, max. 3 A
- Ui 250 VAC
- operating voltage 24 VDC
- potential-free relay outputs
- LED status indication
- learning mode
- for fitting on top-hat rail
- range of up to 450 m in the open field and up to 40 m indoors




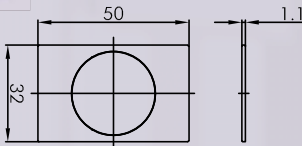


PXFE868

**customised configuration of the proboxx
under proboxx.schlegel.biz**

Accessories for pushbuttons and switches

Illustration	Dimensions	Description	Type
		<p>Flat lens, non-transparent</p> <p>colour</p> <ul style="list-style-type: none"> blue yellow green black red white 	<ul style="list-style-type: none">  T22RRGBL  T22RRGGB  T22RRGGN  T22RRGSW  T22RRGRT  T22RRGWS
		<p>Flat lens, transparent</p> <p>colour</p> <ul style="list-style-type: none"> blue yellow green clear red 	<ul style="list-style-type: none">  T22RRBL  T22RRGB  T22RRGN  T22RRKL  T22RRRT
		<p>Blank nameplate</p>	BSRRU
		<p>Nameplate with standard imprint</p> <p>please specify index number (see nameplates in the product catalogue)</p>	BSRR...
		<p>Mounting bracket for enclosures with 1 pushbutton or switch</p> <p>for fixing the proboxx on a wall or on a profile</p> <p>Material plastic</p>	PXH1
		<p>Mounting bracket for enclosures with 2 pushbuttons or switches</p> <p>for fixing the proboxx on a wall or on a profile</p> <p>Material plastic</p>	PXH2

Accessories for pushbuttons and switches

Illustration	Dimensions	Description	Type
		<p>Mounting bracket for enclosures with 3 pushbuttons or switches</p> <p>for fixing the proboxx on a wall or on a profile</p> <p>Material plastic</p>	PXH3
		<p>Mounting bracket for enclosures with 4 pushbuttons or switches</p> <p>for fixing the proboxx on a wall or on a profile</p> <p>Material plastic</p>	PXH4
 		<p>Marking tag</p> <p>for labelling the pushbuttons and switches of the proboxx enclosure series</p> <ul style="list-style-type: none"> - easy to mount, clip-on type - laser marking (as per customer's request) <p>Material plastic</p> <p>colour black</p>	 PXABT
	IP65	<p>Cap</p> <p>screwable cap for unused M12 connection</p> <p>Material plastic</p>	PXSKM



[About Us](#)

[Pushbuttons/Switches](#)

[Panel Mount Jacks](#)

[Emergency-Stop Buttons](#)

[Bus Technology](#)

[RFID](#)

[→ Enclosures](#)

[Pedal Switches](#)

[Terminal Blocks](#)

[Type Index](#)

丸紅エレネクスト株式会社

Marubeni
Ele-Next



〒530-0003 大阪市北区堂島1丁目6番20号 TEL: 06-6344-2111 FAX: 06-6346-6611
URL: <https://www.m-elenext.co.jp>

特殊部品カンパニー

新横浜支店 (045-474-9524) ・名古屋支店 (052-201-7071) ・大阪支店 (06-7656-3690)

事業所

仙台支店・関東支店 川越オフィス・関東支店 新横浜オフィス・浜松支店・名古屋支店・北陸出張所(富山)
京滋支店(京都)・大阪支店・姫路支店・四国支店(高松)・九州支店(福岡)



Georg Schlegel GmbH & Co. KG
Kapellenweg 4
88525 Dürmentingen / Germany

☎ +49 (0) 7371 / 502-0
📠 +49 (0) 7371 / 502 49
@ info@schlegel.biz
www.schlegel.biz



Subsidiaries:

Schlegel Elektrokontakt GmbH
Schönbachstr. 93
04299 Leipzig / Germany

Tel.: +49 (0)341 / 8 68 72-0
Fax: +49 (0)341 / 8 68 72 43
E-Mail: leipzig@schlegel.biz
www.schlegel.biz

Georg Schlegel Vertriebs Ges.mbH
Samuel Morse-Straße 7
2700 Wiener Neustadt / Austria

Tel.: +43 (0) 2622 / 81313
Fax: +43 (0) 2622 / 81313-19
E-Mail: schlegel@schlegel.at
www.schlegel.at